

**EUDORA**<sup>TM</sup>  
Version



**Eudora® Email 6.0  
New Features Manual  
for Macintosh**

This manual was written for use with the Eudora for Macintosh software version 6.0. This manual and the Eudora software described in it are copyrighted, with all rights reserved. This manual and the Eudora software may not be copied, except as otherwise provided in your software license or as expressly permitted in writing by QUALCOMM Incorporated.

Export of this technology may be controlled by the United States Government. Diversion contrary to U.S. law prohibited.

Copyright © 1992-2003 by QUALCOMM Incorporated. All rights reserved.

Copyright © 1988-1992 by the University of Illinois Board of Trustees.

Portions of the Eudora software were written by John Norstad, Copyright © 1988-1990 Northwestern University, and David Johnson, Copyright © 1984 Brown University. All rights reserved.

The LDAP Library is Copyright © 1992-1996 by the Regents of the University of Michigan. All rights reserved.

QUALCOMM, Eudora, Eudora Pro, Eudora Light, and QChat are registered trademarks of QUALCOMM Incorporated.

PureVoice, SmartRate, MoodWatch, WorldMail, and the Eudora logo are trademarks of QUALCOMM Incorporated.

Apple, AppleTalk, Macintosh, and the Apple logo are registered trademarks and QuickTime, AppleTalk, LocalTalk, Keychain, and MacTCP are trademarks of Apple Computer, Inc.

Adobe, Acrobat, and Acrobat Exchange are registered rademarks of Adobe Systems Incorporated.

Microsoft, Windows, Outlook Express, Outlook 2000, and Internet Explorer are registered trademarks of Microsoft Incorporated in the United States and/or other countries.

Certicom™ and SSL Plus™ are trademarks of Certicom Corp. Copyright © 1997-2000 Certicom Corp. Portions are subsidiary of Certicom Corp. All rights reserved. Protected by U.S. 6,049,815; U.S. 5,896,455; U.S. 5,889,865, U.S. 5,761,305; U.S. 5,787,028; U.S. 4,745,568. Patents pending.

All other trademarks and service marks are the property of their respective owners.

NOTICE:THIS IS A CONTRACT. BY INSTALLING AND USING THIS SOFTWARE, YOU ARE AGREEING TO BE BOUND BY ALL THE TERMS AND CONDITIONS OF THIS AGREEMENT. PLEASE READ CAREFULLY BEFORE PROCEEDING. IF YOU DO NOT AGREE TO THESE TERMS, PROMPTLY DESTROY ALL COPIES OF THE SOFTWARE IN YOUR POSSESSION.

Use of the Eudora software and other software and fonts accompanying your license (the "Software") and its documentation is at your sole risk. The Software and its documentation (including this manual), and QUALCOMM's software maintenance and extended maintenance, if applicable, are provided "AS IS" and without warranty of any kind and QUALCOMM and QUALCOMM's Licensor(s), including but not limited to the University of Illinois and Apple Computer, Inc. (collectively herein referred to as "QUALCOMM"), EXPRESSLY DISCLAIM ALL WARRANTIES, EXPRESS OR IMPLIED, INCLUDING, BUT NOT LIMITED TO THE IMPLIED WARRANTIES OF MERCHANTABILITY AND FITNESS FOR A PARTICULAR PURPOSE AND AGAINST INFRINGEMENT. QUALCOMM DOES NOT WARRANT THAT THE FUNCTIONS CONTAINED IN THE SOFTWARE WILL MEET YOUR REQUIREMENTS, OR THAT THE OPERATION OF THE SOFTWARE WILL BE UNINTERRUPTED OR ERROR-FREE, OR THAT DEFECTS IN THE SOFTWARE WILL BE CORRECTED. FURTHERMORE, QUALCOMM DOES NOT WARRANT OR MAKE ANY REPRESENTATIONS REGARDING THE USE OR THE RESULTS OF THE USE OF THE SOFTWARE OR ITS DOCUMENTATION IN TERMS OF THEIR CORRECTNESS, ACCURACY, RELIABILITY, OR OTHERWISE. NO ORAL OR WRITTEN INFORMATION OR ADVICE GIVEN BY QUALCOMM OR A QUALCOMM AUTHORIZED REPRESENTATIVE SHALL CREATE A WARRANTY OR IN ANY WAY INCREASE THE SCOPE OF THIS WARRANTY. SOME JURISDICTIONS DO NOT ALLOW THE EXCLUSION OF IMPLIED WARRANTIES, SO THE ABOVE EXCLUSION MAY NOT APPLY.

UNDER NO CIRCUMSTANCES INCLUDING NEGLIGENCE, SHALL QUALCOMM AND ITS DIRECTORS, OFFICERS, EMPLOYEES OR AGENTS BE LIABLE FOR ANY INCIDENTAL, SPECIAL OR CONSEQUENTIAL DAMAGES (INCLUDING DAMAGES FOR LOSS OF PROFITS, LOSS OF BUSINESS, BUSINESS INTERRUPTION, LOSS OF BUSINESS INFORMATION AND THE LIKE) ARISING OUT OF THE USE OR INABILITY TO USE THE SOFTWARE OR ITS DOCUMENTATION, EVEN IF QUALCOMM OR A QUALCOMM AUTHORIZED REPRESENTATIVE HAS BEEN ADVISED OF THE POSSIBILITY OF SUCH DAMAGES. SOME JURISDICTIONS DO NOT ALLOW THE LIMITATION OR EXCLUSION OF LIABILITY FOR INCIDENTAL OR CONSEQUENTIAL DAMAGES SO THE ABOVE LIMITATION OR EXCLUSION MAY NOT APPLY.

In no event shall QUALCOMM's total liability to you for all damages, losses, and causes of action (whether in contract, tort [including negligence] or otherwise) exceed the amount paid for the Software and its documentation.

The Eudora software was designed and written by Steve Dorner, Pete Resnick, John Boyd, Alan Bird, Martin Naiman, John Purlia, Clarence Wong, Christine Park, Forest Hill and Scott Gruby. Quality assurance performed by Matt Dudziak and Gwen Huntley. Other contributors to this version of Eudora are Danny Atwood, Craig Beck, Ellen Boemer, Anton de Anda, Matt Dudziak, Bill Ganon, Carolyn Schultz, Eugene Son, Dawn Shump, Joe Toth, and Jim Ybarra. This manual was written by Armand Rouleau. Earlier manuals were written by Justine Correa, Ron Durban, and Steve Janoff. Icons were designed by Arlo Rose.

Thanks to Tim Maroney for the folder-choosing code, John Norstad for the window placement code, John Bruner for the Mishawaka font, Ray Davison for the Include Self code, David Johnson for the BinHex code, and Cal Simone of Mainstay for help in redesigning Eudora's AppleScript Dictionary.

The SpamHeaders plug-in was made easy thanks to the Boost Regular Expression Library, one of a group of free, peer reviewed portable C++ libraries maintained at <http://www.boost.org>

The SpamWatch plug-in was heavily influenced by work done by Paul Graham, and publicized in his article "A Plan for Spam" <http://www.paulgraham.com/spam.html>, and additional suggestions made by Gary Robinson in his Linux Journal article "Spam Detection" <http://radio.weblogs.com/0101454/stories/2002/09/16/spamDetection.html>.

Finally, thanks to all the users and testers of Eudora, whose suggestions have made it a much better program than it otherwise would have been.

## About the Name

Why the name Eudora?

When looking for a name for this new Post Office Protocol mail program, we thought immediately of the title of the short story "Why I Live at the P.O.," and named the program after the author of the story, Eudora Welty.

"Why I Live at the P.O." can be found in a collection entitled A Curtain of Green and other stories (Harcourt Brace & Co.). Ms. Welty's stories are funny, sad, and fascinating; she's surely one of the great American writers.

**Eudora 6.0 New Features 5**

Using the Junk Mail Filter for Incoming Messages	5
Changing the Junk Mail Settings	7
Using the Content Concentrator	9
Changing the Content Concentrator Settings	10
Using the Mailbox Drawer	12
Sending Mail Through One Account (SMTP Relay)	13
Contextual filing	15

# Eudora 6.0 New Features

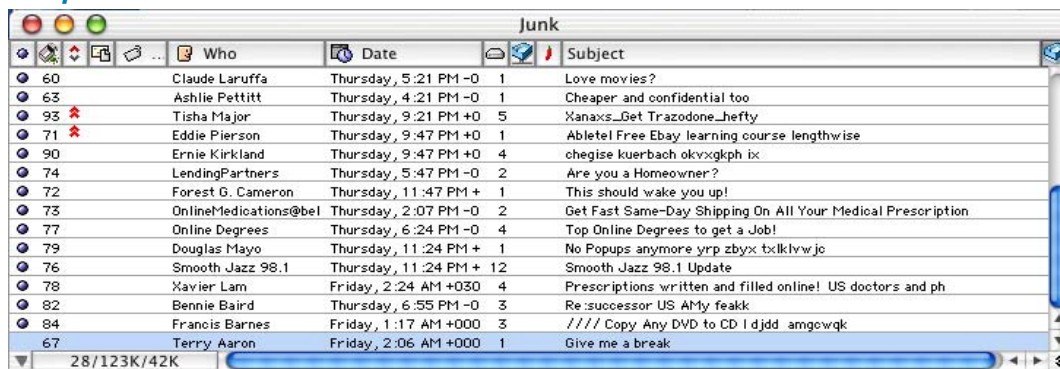
Welcome to Eudora® 6.0! This document describes the new features and functions in Eudora 6.0 for the Macintosh.

- **SpamWatch.** This powerful feature lets you manage junk email messages (spam) without wasting time.
- **Content Concentrator.** This feature lets you group threaded messages and view them all at once in the preview pane of a mailbox.
- **Mailbox Drawer (OS X only).** This feature lets you click a drawer icon to show your list of folders and mailboxes.
- **SMTP Relay.** This feature lets you send all your mail through one account.
- **Contextual Filing.** This feature lets you highlight a specific word in any message and transfer it to the mailbox of the same name (as the word).

## Using the Junk Mail Filter for Incoming Messages

Once you install Eudora 6.0, Eudora will ask you if you want to install a new mailbox called **Junk** to hold junk email messages (spam). The Junk mailbox appears in your mailbox list. The Junk mailbox is a special mailbox like the In, Out, and Trash mailboxes. It cannot be deleted or renamed.

### *sample Junk mailbox*



	Who	Date	Subject
60	Claude Laruffa	Thursday, 5:21 PM -0	1 Love movies?
63	Ashlie Pettitt	Thursday, 4:21 PM -0	1 Cheaper and confidential too
93	Tisha Major	Thursday, 9:21 PM +0	5 Xanaxs_Get Trazodone_hefty
71	Eddie Pierson	Thursday, 9:47 PM +0	1 Abletel Free Ebay learning course lengthwise
90	Ernie Kirkland	Thursday, 9:47 PM +0	4 chegise kuerbach okvxxgkph ix
74	LendingPartners	Thursday, 5:47 PM -0	2 Are you a Homeowner?
72	Forest G. Cameron	Thursday, 11:47 PM +	1 This should wake you up!
73	OnlineMedications@bel	Thursday, 2:07 PM -0	2 Get Fast Same-Day Shipping On All Your Medical Prescription
77	Online Degrees	Thursday, 6:24 PM -0	4 Top Online Degrees to get a Job!
79	Douglas Mayo	Thursday, 11:24 PM +	1 No Popups anymore.yrp.zbyx.txlklyw.jc
76	Smooth Jazz 98.1	Thursday, 11:24 PM +	12 Smooth Jazz 98.1 Update
78	Xavier Lam	Friday, 2:24 AM +030	4 Prescriptions written and filled online! US doctors and ph
82	Bennie Baird	Thursday, 6:55 PM -0	3 Re:successor US AMy fealk
84	Francis Barnes	Friday, 1:17 AM +000	3 //// Copy Any DVD to CD 1 djdd.amgwqk
67	Terry Aaron	Friday, 2:06 AM +000	1 Give me a break

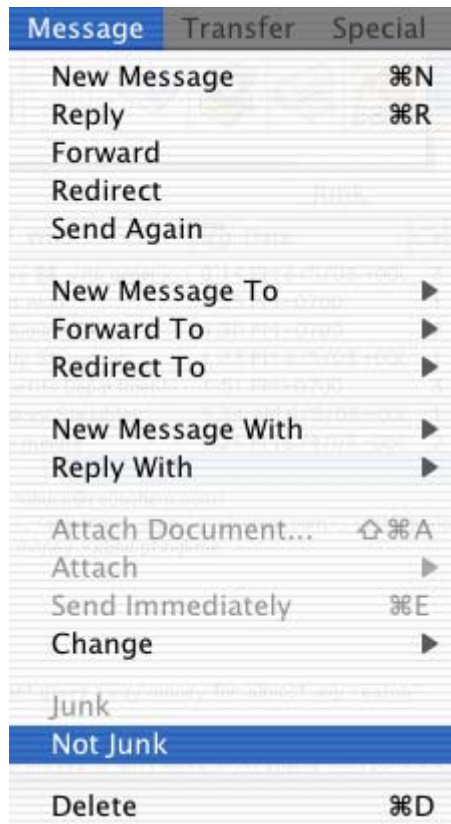
When you check for mail, Eudora recognizes which incoming messages are junk, and those messages are filtered into the Junk mailbox. Your incoming mail goes through the Junk filter before any other filter you may have set up. After a certain number of days (30 days is the default), Eudora automatically deletes these messages.

Occasionally, Eudora may think a message is junk when it is not.

### To manage messages in the Junk mailbox that are not junk

1. Scan the messages in the Junk mailbox and select and highlight those that you consider not junk mail.
2. From the Message menu, choose **Not Junk**.

*Message menu with Not Junk option selected*



*By choosing the Not Junk command, the messages you selected are automatically filtered to go to the designated mailboxes you have previously set up.*

**NOTE:** With time, Eudora learns which messages you deem not junk and filters them to your designated mailboxes automatically.

Conversely, if you find Junk mail in your other mailboxes, just choose **Junk** from the Message menu, and these messages are transferred to the Junk mailbox. Over time, Eudora eventually learns to recognize these messages as junk and filter them into the Junk mailbox.

## Changing the Junk Mail Settings

You can change Junk Mail settings in the Junk mail settings dialog. In this dialog, you can determine at what junk score level you wish your messages to be filtered and adjust other junk mail options.

### To display the Junk Mail settings dialog

1. From the Special menu, choose **Settings**.
2. Scroll and click the **Junk Mail** icon.

*The Junk Mail Settings dialog appears.*

### Junk Mail settings dialog



3. Select the settings you want to change. Following are the descriptions of the settings.

**Junk Threshold**—Eudora distinguishes junk mail by a scoring system. You can adjust this scoring threshold by using the slide bar indicator. If you slide the arrow to a lower number, Eudora filters out more junk mail but may also mistakenly filter more valid mail to the Junk mailbox. If you slide the arrow to a higher number, Eudora filters less junk mail but is less likely to incorrectly filter valid mail. The default setting is 50.

## Junk & Address Books

**Mail isn't junk if the sender is in an address book**—Check this box to indicate that mail coming from people in your address book(s) should never be marked as junk mail.

**NOTE:** Do not turn on the following field unless the *Mail isn't junk if the sender is in an address book* box is checked.

**Put Not Junk-ed senders in address book**—Check this box to indicate that senders of valid mail found in the Junk mailbox are to be added to your address book when you select Not Junk from the Message menu. Future mail from this sender will never be filtered to the Junk mailbox again. This function only works when the previous option is checked.

## Junk Mailbox

**Hold junk in Junk mailbox**—Check this box if you want Eudora to filter what it considers junk mail to the Junk mailbox. If this is not checked, junk mail appears in your In box and is scored. To see the junk mail score, go to the *Mailbox Display* settings dialog in the Special menu and check the Junk box (located under the *Columns* section).

**Junk mailbox is never marked unread**—Check this box if you don't want your Junk mailbox to indicate that it contains unread mail.

**Remove mail that is at least \_ days old**—Enter the number of days you'd like Eudora to keep junk mail in the Junk mailbox. Eudora scans the Junk mailbox periodically and removes the messages after the set number of days you enter in this field.

**Warn before removing**—Check this box if you want Eudora to warn you that junk mail messages are about to be removed from the Junk mailbox.

## Command Key

**Use cmd J for “Junk”**—Check this box if you want to assign Cmd+J short cut key for Junk mail movement.

## Using the Content Concentrator

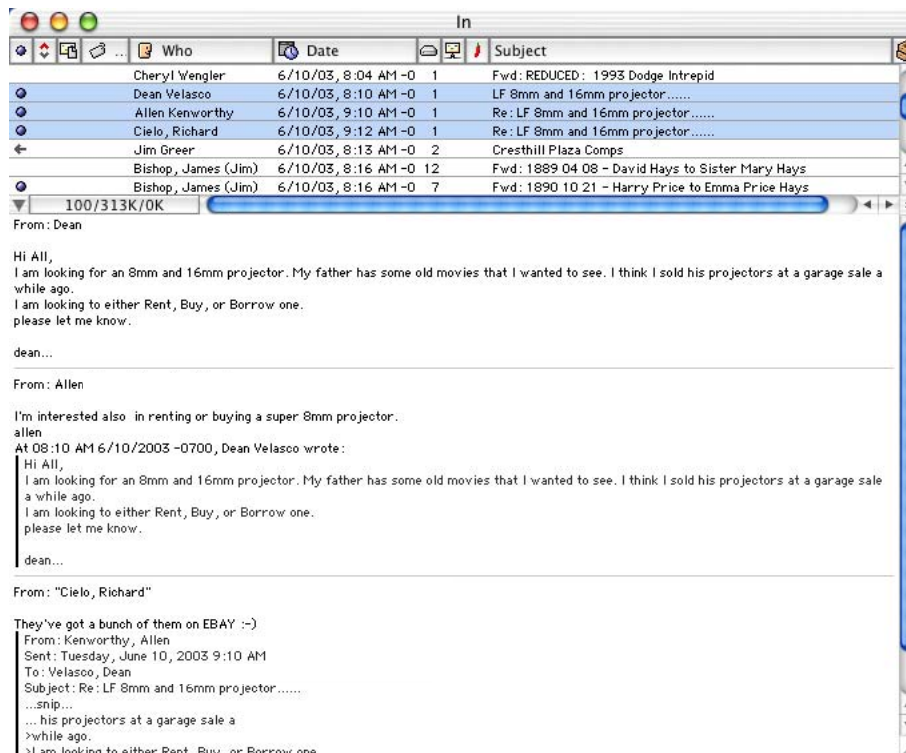
This feature allows you to group threaded messages and view them all at once in the preview pane of a mailbox and trims redundant headers and text from the previewed messages. Threaded messages are messages you receive that were either sent, forwarded, or redirected to you concerning the same subject.

### To group threaded messages and view them in the preview pane

1. In the selected mailbox, select and highlight the message you want to group.
2. Press the Option key and click on the message.

**NOTE:** You can group messages in two ways, by sender or by subject. Click the sender's name or subject when pressing the Option key. The messages are grouped by sender or by subject.

*All messages that are threaded to the selected message appear together.*

**Grouped threaded messages (by subject)**

*All the highlighted messages in the thread appear with abbreviated headers in the preview pane.*

**NOTE:** The messages appear concentrated as a single message in the preview pane.

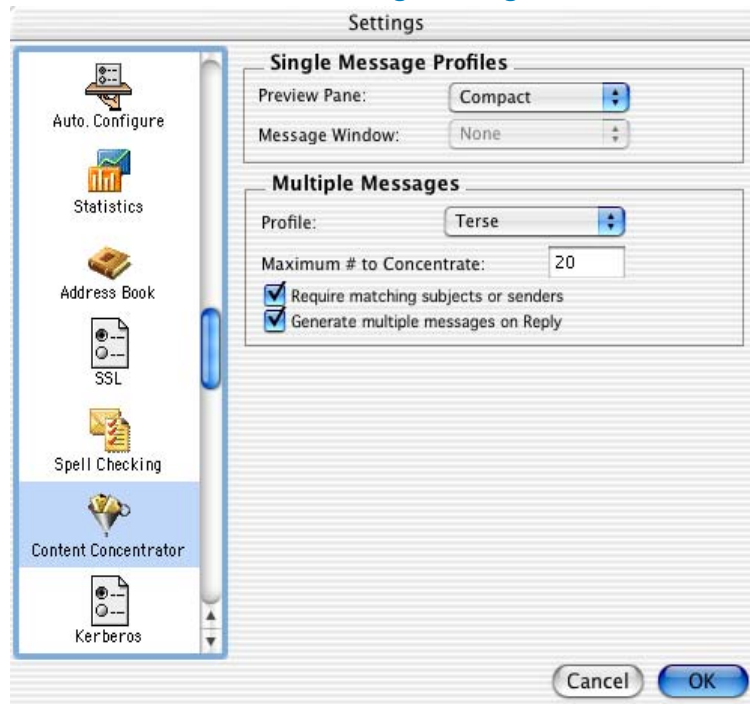
## Changing the Content Concentrator Settings

You can change how the concentrated messages appear in the preview pane.

### To display the Content Concentrator settings dialog

1. From the Special menu, choose **Settings**.
2. Scroll and click the **Content Concentrator** icon.

*The Content Concentrator Settings dialog appears.*

**Content Concentrator settings dialog**

- From the pop up menus, select the settings you want to change. Following are the descriptions of the settings.

**Single Message Profiles**

**Preview Pane**—The profile of single concentrated messages as they appear in the preview pane. Choose one of the options from the pop-up menu. *Compact* is the default. Following are the options:

**None**—This turns off Content Concentrator. There is no change in the message format.

**Compact**—Message is truncated; that is, excess headers and text are removed and replaced with ellipses and a snip indicator. Only the To:, From:, Subject:, and CC: headers appear in the message.

**Terse**—Message is truncated further; only the From: field of the header appears in the message and the concentrated body of the message.

**Message Window**—(will be implemented in a future version of Eudora).

**Multiple Messages**


**Profile**—The profile of multiple concentrated messages as they appear in the preview pane. Choose one of the options from the pop-up menu. *None* is the default.

**Maximum # to Concentrate**—Enter the maximum number of messages you would like to group. Keeping this number small is recommended because concentrating a large number of messages can take time. The default is 20.

**Require matching subjects or senders**—Check this box if you want subjects and senders to match when selected a message to group.

**Generate multiple messages on Reply**—Check this box if you want individual reply messages to be sent to each sender of each concentrated message instead of one message being sent to all the senders.

## Using the Mailbox Drawer

This feature lets you click a drawer icon  to show your folders and mailboxes from an opened mailbox. This icon is located on the far right corner of your mailbox.

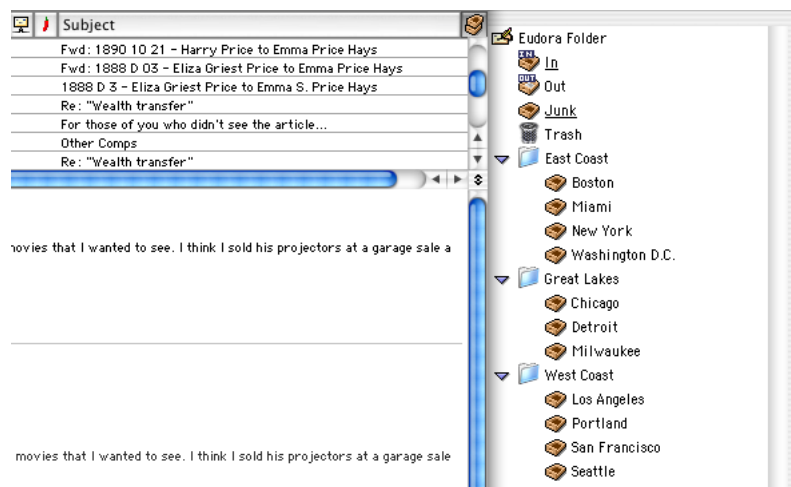
**NOTE:** The mailbox drawer requires Mac OS X 10.2 or greater.

### To show your folders and mailboxes

- Click the mailbox drawer icon or from the Window menu, choose **Drawer**.

*Your folders and mailboxes appear.*

### Mailbox drawer showing folders and mailboxes



### Other functions of the Mailbox drawer

- Drag a message to the drawer button to open the drawer.
- Click a mailbox in the drawer to replace the mailbox that is now displayed.
- Drag message summaries from the displayed mailbox into any other mailbox in the drawer to transfer the messages to that mailbox.

## Sending Mail Through One Account (SMTP Relay)

The Internet Service Provider (ISP) with whom you have your primary email account may not allow you to send messages through any other Simple Mail Transfer Protocol (SMTP) server but their own. If you have accounts at other ISPs or third-party email services, you may not be able to send mail from those accounts unless you use your primary ISP's SMTP servers. The SMTP relay feature allows you to send all your mail through your primary ISP's server.

### To use SMTP relay

**NOTE:** You must check the *Use relay personality, if defined* box in the Personality Extra settings dialog for each of your personalities that will use the SMTP relay.

1. From the Special menu, choose **Settings**.
2. Scroll and click **Sending Mail**.

*The Sending Mail dialog appears.*

**Sending Mail Settings dialog**

3. In the *SMTP Relay Personality* field, choose the personality previously set up for the SMTP relay from the pop-up menu. *None* is the default.
4. Click **OK**.

*All messages sent from each of your personalities for which you checked the Use relay personality, if defined box in the Personality Extra settings dialog will authenticate the account information for the selected personality.*

For example, if you bring your computer to a friend's house or your office, you can easily change your SMTP relay to a personality that uses a different ISP to send mail. Or, you can set the relay personality to *None* so that you can send all mail directly to the servers for each personality.

## Contextual filing

You can now highlight a word anywhere in a message (header or text) and transfer the message to a mailbox of the same name. For example, if you have a mailbox called Technical, you can highlight the word “technical” anywhere in the message and transfer the entire message to the Technical mailbox.

### To perform a contextual filing

1. Highlight the word.
2. Hold the control key and click the word, or if you have a two button mouse, right click.

*The contextual filing submenu appears showing the mailbox of the same name*

#### Contextual filing submenu



3. Choose the mailbox.

*The message transfers to the selected mailbox.*